

*Atlas Copco*

# Product Portfolio Overview



**FieldForce**

Rentals • Services • Sales

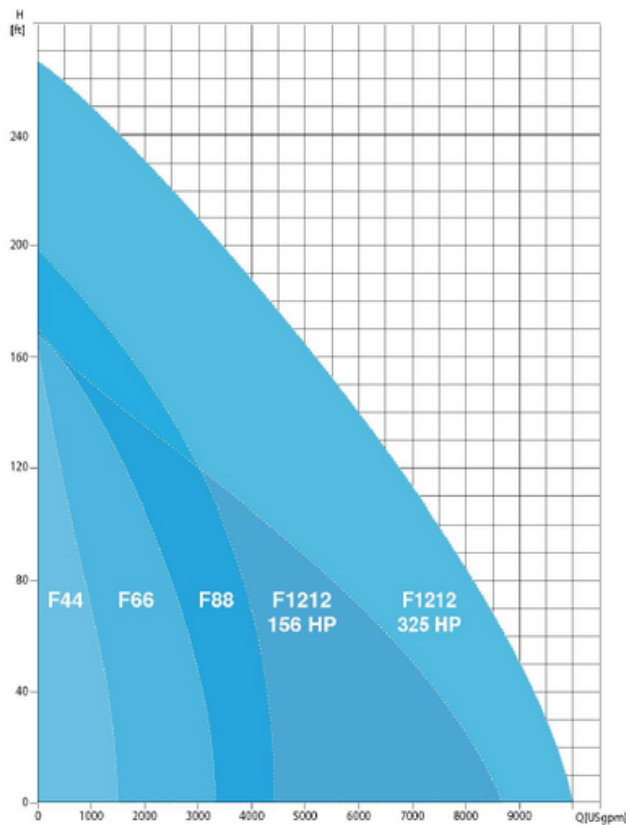
## Flow Series Pumps

### Technical data

Specifications		PAC F44	PAC F66   PAS F66	PAC F88   PAS F88	PAC F1212 JD-S 156   325 HP
Max. head	ft	152	166	200   195	153   269
Max. capacity	Us gpm	1,320	2,640	3,950   3,750	7,210   9,000
Suction flange size	in	4	6	8	12
Discharge flange size	in	4	6	8	12
Max. solids handling	in	3	3	3	3.5
Best efficiency point	%	73.5	79   76	82   80	74
Engine Make		Kohler	Kohler	John Deere	John Deere
Emission compliance		FT4	FT4	FT4	FT4
Max. engine power	HP	49	74	125	156   325
Max. operating speed	rpm	2,100	1800	2000	1900**   1750
Max. fuel autonomy	h	50	25.7	18.5	25.6   8.8

\*\*Engine Speed

### Operation Area



# Self Priming Surface Pumps

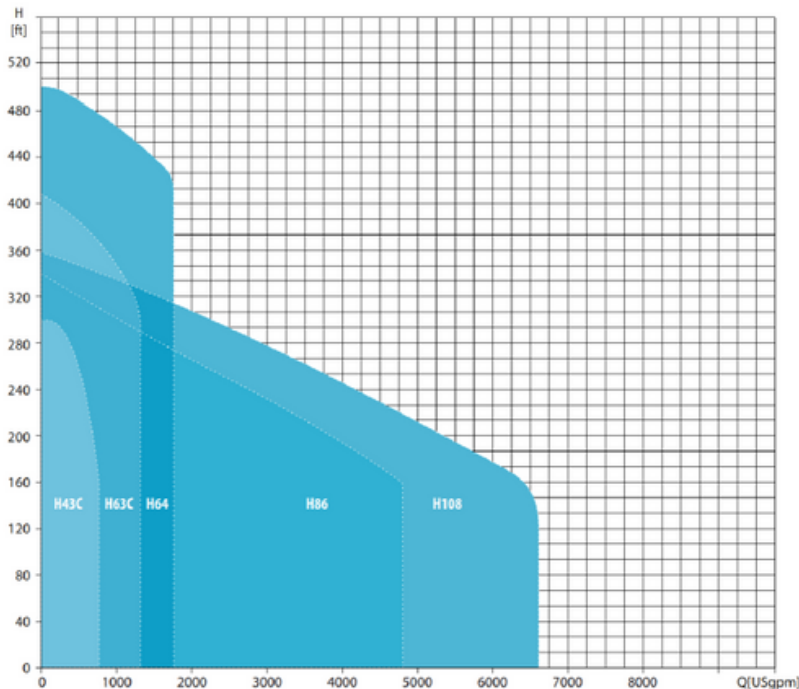
*Atlas Copco*

## PAC H Series Pumps

### Technical data

Specifications		PAC H43C	PAC H63	PAC H64	PAC H108
Max. head	ft	302	460	500	360
Max. capacity	Usgpm	660	1100	1950	6400
Suction flange size	inch	4	6	6	10
Discharge flange size	inch	3	4	4	8
Max. solids handling	inch	¾	0.75	3	3.5
Best efficiency point	%	62	66	69	82
Engine					
Emission compliance		FT4	FT4	FT4	FT4
Max. engine power	HP	74	173	275	325
Max. operating speed	rpm	2600	2100	2100	1800
Max. fuel autonomy	h	16	22	18	17
Weight and dimensions					
Weight (wet)	lbs	3,665	8,763	10,300	13,400
Length	inch	153	180	180	192
Width	inch	78	82	82	95
Height	inch	72	96	96	100

### Operation area



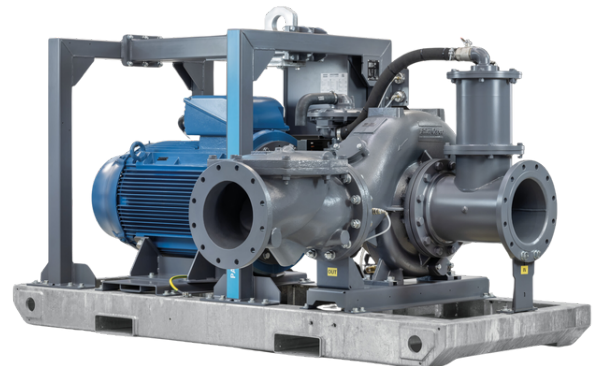
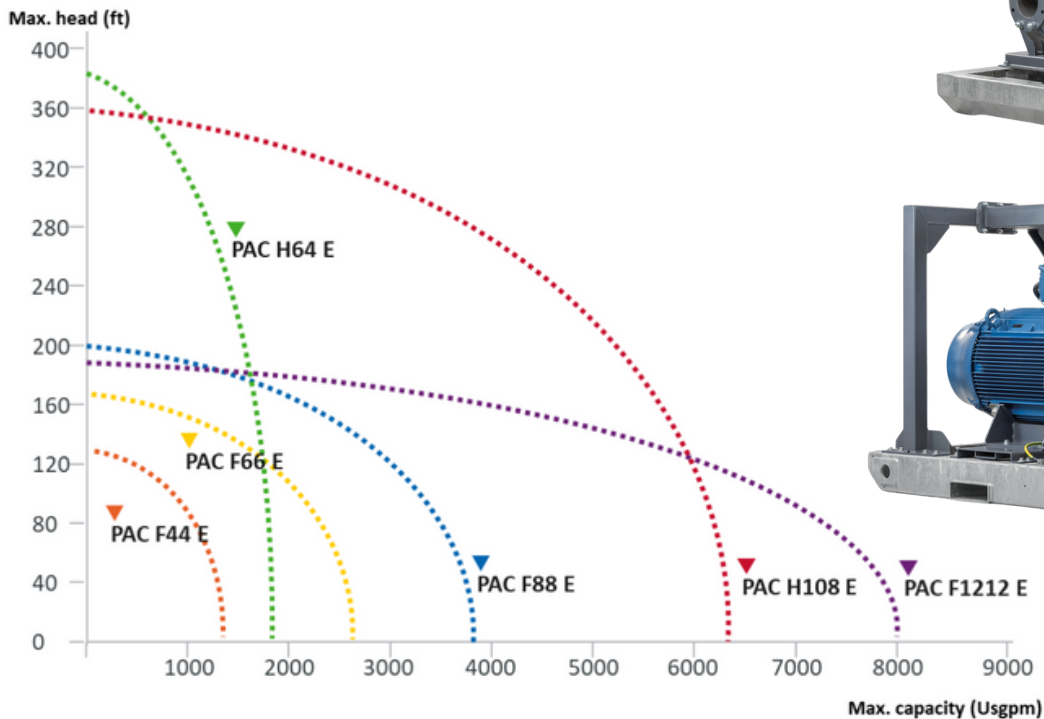
# Electric Surface Pumps

*Atlas Copco*

## PAC Flow and Head series data

Specifications		PAC F44 E	PAC F66 E	PAC F88 E	PAC F1212 E	PAC H64 E	PAC H108 E
Max. head	ft	140	166	200	195	380	360
Max. capacity	Usgpm	1320	2,640	3,950	8,000	1900	6400
Suction flange size	inch	4	6	8	12	6	10
Discharge flange size	inch	4	6	8	12	4	8
Max. solids handling	inch	3	3	3	3.5	3	3.5
Best efficiency point	%	73.5	79	82	74	69	82
Motor (WEG)		W22 - IE3 Premium Efficiency	W22 - IE3 Premium Efficiency	W22 - IE3 Premium Efficiency	W22 - IE3 Premium Efficiency	W22 - IE3 Premium Efficiency	W22 - IE3 Premium Efficiency
Motor power	HP	50	75	150	350	350	350
Max. operating speed	rpm	1800	1800	1800	1800	1800	1800
Rated Voltage/Frequency	V/Hz	460/60	460/60	460/60	460/60	460/60	460/60
Rated Current	A	60.7	85.1	170	384	384	384
Weight and dimensions							
Weight (dry)	lbs	2755	3415	4520	6950	6724	6724
Length	inch	93.5	93.5	93.5	118.8	118.1	118.1
Width	inch	44.1	46.8	52.2	50.8	51.2	62.6
Height	inch	68.7	68.7	69	69.9	70	69.3

## PAC Flow series



# Submersible Pumps

*Atlas Copco*

## WEDA Drainage Range



Model	Discharge (in)	Max Power input (kW)	Max flow (gpm)	Weight (lb)	Power (hp)	Part #
WEDA D10	2	1.8	132	29	1.5	3081620850
WEDA D30	3	2.9	390	44	3	3081620854
WEDA D40	3	4.1	450	56	4.3	3081620861
WEDA D50	4	7.5	630	122	8.5	3081620871
WEDA D60	4	9.9	700	136	11.5	3081620875
WEDA D70	6	15	1230	244	18	3081620945
WEDA D80	6	23	1550	389	31	3081620839
WEDA D90	6	34	1710	400	40	3081620843
WEDA D95	8	50	2980	589	58	3081621132
WEDA D100	10	74	4780	1156	92	3081621188

## WEDA Sludge Range

Model	Discharge (in)	Max Power input (kW)	Max flow (gpm)	Weight (lb)	Power (hp)	Part #
WEDA S04N	2	0.7	62	24	0.5	8162172900
WEDA S08N	2	1.2	65	29	1	8162173100
WEDA S30N (1ph)	3	2.9	230	56	3	3081620407
WEDA S30N (3ph)	3	3.9	250	56	4	3081620418
WEDA S50N	4	6.2	370	131	7	3081620755
WEDA S60N	4	8	420	144	9.3	3081620639



## WEDA Slurry Range



Model	Discharge (in)	Max Power input (kW)	Max flow (gpm)	Weight (lb)	Power (hp)	Part #
WEDA L40N	3	4.5	220	411	5	8381070300
WEDA L50N	4	6.8	350	578	7.4	8381070301
WEDA L60N	4	10.4	480	578	12.1	8381070302
WEDA L70N	4	12.8	530	600	14.8	8381070303
WEDA L80N	4	16.1	790	689	20	8381070304
WEDA L95N	4	40	1190	1667	50	8381070305
WEDA L100N	6	49	2600	2233	60	8381070306
WEDA L110N	6	80	2200	2378	101	8381070307

# Mobile Diesel & Gas Generators

*Atlas Copco*

Model	Tier	kVA (PRP)	Engine	Part Number
QAS 25 ID T4F NB	T4F	25	Isuzu	8972823120
QAS 45 ID T4F NB	T4F	45	Isuzu	8972823123
QAS 70 ID T4F SV	T4F	70	Isuzu	8972823233
QAS 95 JD T4F SV	T4F	95	John Deere	8972823235
QAS 125 JD T4F SV	T4F	125	John Deere	8972823237
QAS 150 JD T4F SV	T4F	150	John Deere	8972823239
QAS 175 T4F PRS	T4F	175	FPT	8972823327
QAS 200 JD T4F SV	T4F	200	John Deere	8972823242
QAS 235 T4F PRS	T4F	235	FPT	8972823328
QAS 250 JD T4F SV	T4F	250	John Deere	8972823298
QAS 330 T4F PRS	T4F	330	John Deere	8972823247
QAS 410 T4F PRS	T4F	410	Scania	8972823303
QAS 700 T4F PRS	T4F	700	Volvo	8972823279
QAC 1500 Twin Power VD T4F	T4F	1450	Volvo	8170023497



## Portable Gas Generators

*Atlas Copco*



Model	Electrical peak power outlet (W)	Starting System	RPM	Part Number
P 2000iW	1,800 W	Recoil	Inverter	8170023014
P 2500iW	2,500 W	Recoil	Inverter	8170023369
P 3500iW	3,300 W	Electric	Inverter	8170023015
P 6000iW	6,000 W	Electric	Inverter	8170023372
P 3000W	2,800 W	Recoil	3,600	8170023016
P 6500W	5,500 W	Electric	3,600	8170023017
P 8000W	7,000 W	Electric	3,600	8170023018

# Energy Storage Systems

*Atlas Copco*

Model	Output (kVA)	Storage (kWh)	Voltage (V)	Phases	Part Number
<b>ZBC 2000 UL</b>	2kVA	2kWh	120V	Single Phase	8162104599
<b>ZBP 30-75 208V 3ph</b>	30kVA	75kWh	208V	Three Phase	8170023582
<b>ZBP 40-75 240V 1ph</b>	40kVA	75kWh	240V	Split Phase	8170023583
<b>ZBC 250-575 480V 3ph</b>	250kVA	575kWh	480V	Three Phase	8162103934
<b>ZBC 500-250 480V 3ph</b>	500kVA	250kWh	480V	Three Phase	8162104582



# Light Towers

*Atlas Copco*



Model	Lamps	Engine	Light Coverage (ft <sup>2</sup> )	Part Number
<b>HiLight E3+</b>	LED 4 x 160W	Kubota	32,290	8170023436
<b>HiLight V5+ S</b>	LED 4 x 350W	Kubota	53,820	8162104752
<b>HiLight V5+ S w/ Photocell</b>	LED 4 x 350W	Kubota	53,820	8162104753

# Portable Air Compressors

*Atlas Copco*

Model	Engine	CFM	PSI	Part #
XAS 110	Kubota	95	100	8162 0610 90
XAS 185-150	Kubota	174	58-150	8162 0101 30
XAS 188	Kubota	189	100	8972 4262 05
XATS 250	Kubota	250-189	58-175	8162 0100 22
XAS 400-150	John Deere	410-400	72-150	8972 4226 09
XAS 400-150 PFF	John Deere	410-400	72-150	8972 4228 43
XAS 400-200	John Deere	410-365	72-200	8972 4228 45
XAS 400-200 PFF	John Deere	410-365	72-200	8972 4228 46
XAVS 650	John Deere	650-575	200-250	8972 4228 16
XAS 900	John Deere	870-750	100-150	8972 4228 12



# Handheld Tools

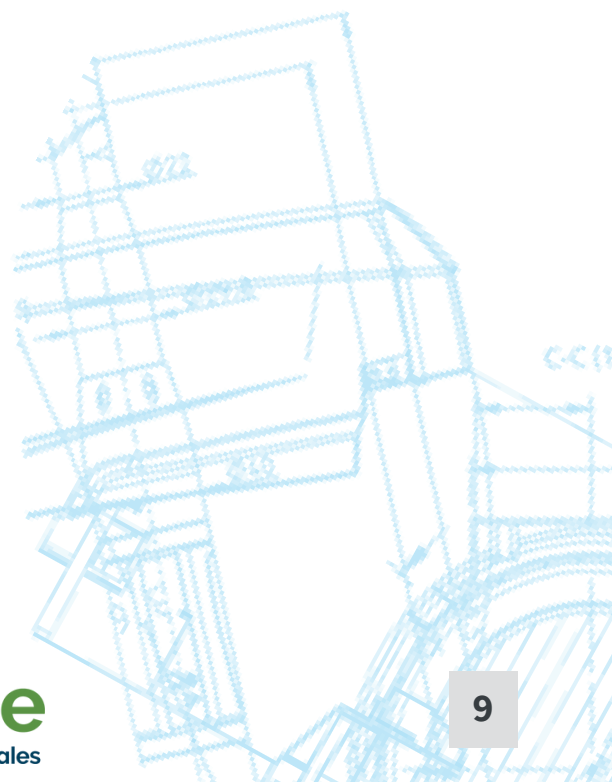
*Atlas Copco*

Model	Available tool Shanks (in)	Weight (lbs)	Air Consumption (cfm)	Impact Rate (bpm)	Part Number
TEXP60S Breaker	1½ x 6, 1¼ x 6	68	76	1,500	8461022723
TEXP90S Breaker	1½ x 6, 1¼ x 6	90	85	1,260	8461022823
TEX 321 Chipping Hammer	.680 R or .580 H	18.5	32	2,200	9246020826
TEX 640 Backfill Tamper	804 Taper	38.5	38.5	1,450	9245997600

Model	Available tool Shanks (in)	Weight (lbs)	Oil Flow (gpm)	Impact Rate (bpm)	Part Number
LH 230 E Breaker	1 x 4¼, 1½ x 6, 1¼ x 6	58.9	4.8-7.9	1500-2100	1801354354
LH 280 E Breaker	1½ x 6, 1¼ x 6	65	4.8-7.9	1350-1750	1801364362
LPD-T Post Driver (Remote valve available)	N/A	71	5.3-7.9	1680	1801405002

\*Power Packs also available

Model	Available tool Shanks (in)	Weight (lbs)	Impact Rate (bpm)	Part Number
COBRA Combi	7/8 x 4¼	55	2,700	8318080010
COBRA PROe	1½ x 6, 1¼ x 6, 1 x 4¼	55	1,440	8318070103
COBRA TTE	1½ x 4¼, 1¼ x 4¼	55	1,620	8318070113



**CONFIDENTIAL.** Any unauthorized disclosure in whole or in part is prohibited.

Note: photos and illustrations contained herein might depict machines with optional and/or extra components which are not included with the standard version of the machine. Unless atlas copco's applicable written quotation specifies that the particular optional/extra component is included with the particular machine being ordered, the machine will not include such optional extra component. We reserve the right to change the specifications and design of products described in this literature without notice. Not all products are available in all markets.



**FieldForce Equipment Sales & Rentals, LLC**  
34 Northeast Drive Hershey, PA 17033 (717) 508-0550  
(724) 591-8655  
fieldforcerentals.com



#### **Atlas Copco Power Technique**

Power Technique North America LLC  
1059 Paragon Way, Rock Hill, SC 29730  
Tel. 800 732 6762  
Fax. 303 288 8828  
[atlascopco.us](http://atlascopco.us)

